



IPD-V2260PVRS

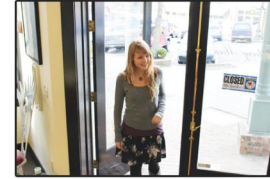
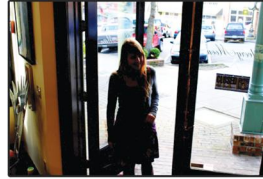
Colour 700/800 TVL 1/3" Sony Effio-P DSP WDR High Res Vandal IR Varifocal Dome Camera (25 mtrs range)



Conventional CCD



Effio-P Sensor



700 TVL
Supreme Resolution

120dB
Wide Dynamic Range

960H
34% MORE VIDEO THAN DVD

IPTEC PREMIERE
NOW WITH 3 YEARS WARRANTY

Effio-P
Digital Signal Processor

OVERVIEW

IPTEC employs the latest 4th Generation Effio-P DSP sensor (the best imaging Night and Day) in their range of WDR Cameras. Designed for applications where High Definition facial recognition is required under extreme dynamic lighting condition, strong light reflections and where intensity of illumination can vary excessively. WDR enables the capture & display of both bright areas and dark areas in the same frame, delivering a very high quality, high resolution and very accurate image.

As each pixel acts as a camera, the picture taken by one pixel does not affect the picture quality captured by other pixels. Additionally, it is equipped with high performance IR LED's allowing it to produce black and white images up to 25 metres in complete darkness. They are furnished with a 2.8 ~ 12mm IR varifocal auto iris lens offering a manually adjustable viewing angle of 28° ~ 136°.

SPECIFICATION

CCD Sensor	1/3" Sony Effio-P DSP Sensor
Resolution	700 TVL (Colour) / 800 TVL (B&W)
Min. illumination	0 Lux LED On
Wide Dynamic Range	120dB (Effio-P)
SDNR	Yes
Viewing Angle	28° ~ 136° (2.8 ~ 12mm)
Selectable via OSD	AGC, Contrast, Sharpness, Motion, Privacy, Mirror, Camera ID, Shutter, WBL, BLC
IR Range	25 metres
S/N Ratio	52dB
Iris Mode	Auto Iris Varifocal
Mounting	Wall / Ceiling
IP Rating	IP67
Dimension	150 x 95.6 mm
Weight	800 g
Power Source	DC12V

MADE IN KOREA